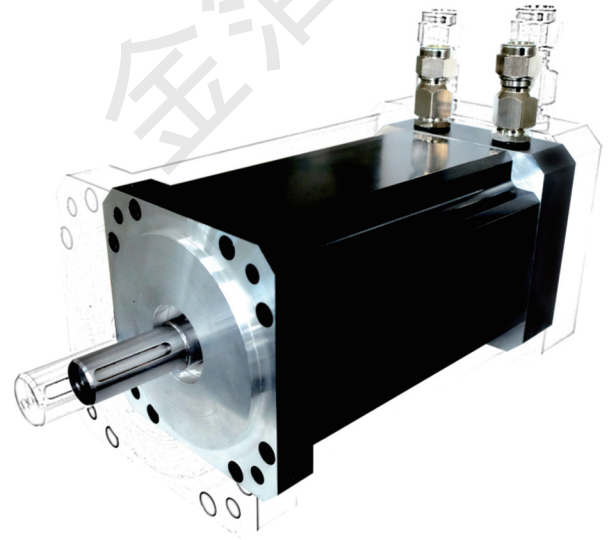


BHM 型

防爆交流永磁伺服电动机

Explosion-proof AC permanent
magnet servo motor



产品特性

防爆伺服电机在含爆炸性气体、有可燃性粉尘环境的加工制造领域越来越受到人们的重视，并获得了广泛应用，可有效提高电机的安全性，可靠性。防爆伺服电机特别适用于包装、自动印刷、搅拌机等机械及化工领域。防爆标志为Ex db II C T4 Gb, Ex tb IIIC T130°C Db, 防护等级IP65。适用于工厂有IIA、IIB、IIC组的爆炸性气体环境，且适用于21区域，A类设备T4条件下爆炸性粉尘环境。

Product characteristics

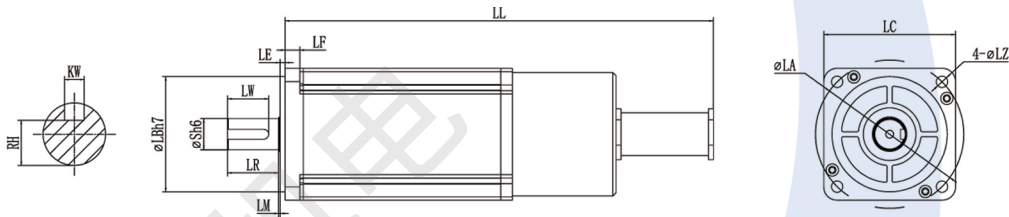
Explosion-proof servo motor has been paid more and more attention and widely used in the processing and manufacturing fields with explosive gas and combustible dust environment. Explosion-proof servo motor can effectively improve the safety and reliability. Explosion-proof servo motor is especially suitable for packaging, automatic printing, mixing and other machinery and chemical fields. Explosion-proof marks for the Ex db II C T4 Gb, Ex tb IIIC T130°C Db, and enclosure protection grade is IP65. which is applicable to the factory that have IIA and IIB, IIC group of explosive gas environment, and Suitable for A21 regions, temperature group T4 of explosive dust environment.

BHM 型防爆交流永磁伺服电动机外形及安装尺寸：

BHM series of explosion-proof AC permanent magnet servo motor outline and installation dimension：

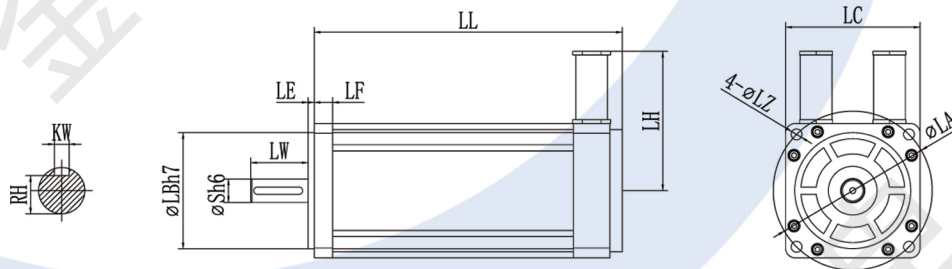
BHM60-80 电动机外形及安装尺寸图

Outline and installation dimensions of BHM 60-80 motor



BHM110-130 电动机外形及安装尺寸图

Outline and installation dimensions of BHM 110-130 motor



安装尺寸表

Installation Dimension Table

产品型号/尺寸 Type/Dimension	60		80		110			130							
	00630	01330	02430	03330	04030	06030	06020	04025	05025	06025	07725	10025	15025	10015	15015
LL	234	254	260	274	219	249	249	231	239	247	262	285	334	285	334
LR	25		31		47			50							
LE	3		3		4.5			4.5							
LF	7		9		12			14							
LW	23		25		40			60							
LM	1		1		3			3							
LB	50		70		95			110							
S	14		19		19			22							
LC	60		80		110			130							
LH	30		40		180			195							
LA	70		90		130			145							
LZ	5.5		7		9			9							
KW	5		6		6			6							
RH	11		15.5		15.5			18.5							
LL' (含制动器) (Containing brake)	LL+39		LL+36		LL+42			LL+52							